

San Mateo County: A Model for Regional Climate Action Planning

County emissions reduction goal: 15% below 2005 levels by 2020



Participating Cities:

Belmont
Brisbane
Burlingame
Daly City
East Palo Alto
Foster City
Half Moon Bay
Menlo Park
Millbrae
Pacifica
Redwood City
San Bruno
San Carlos
San Mateo
South San Francisco

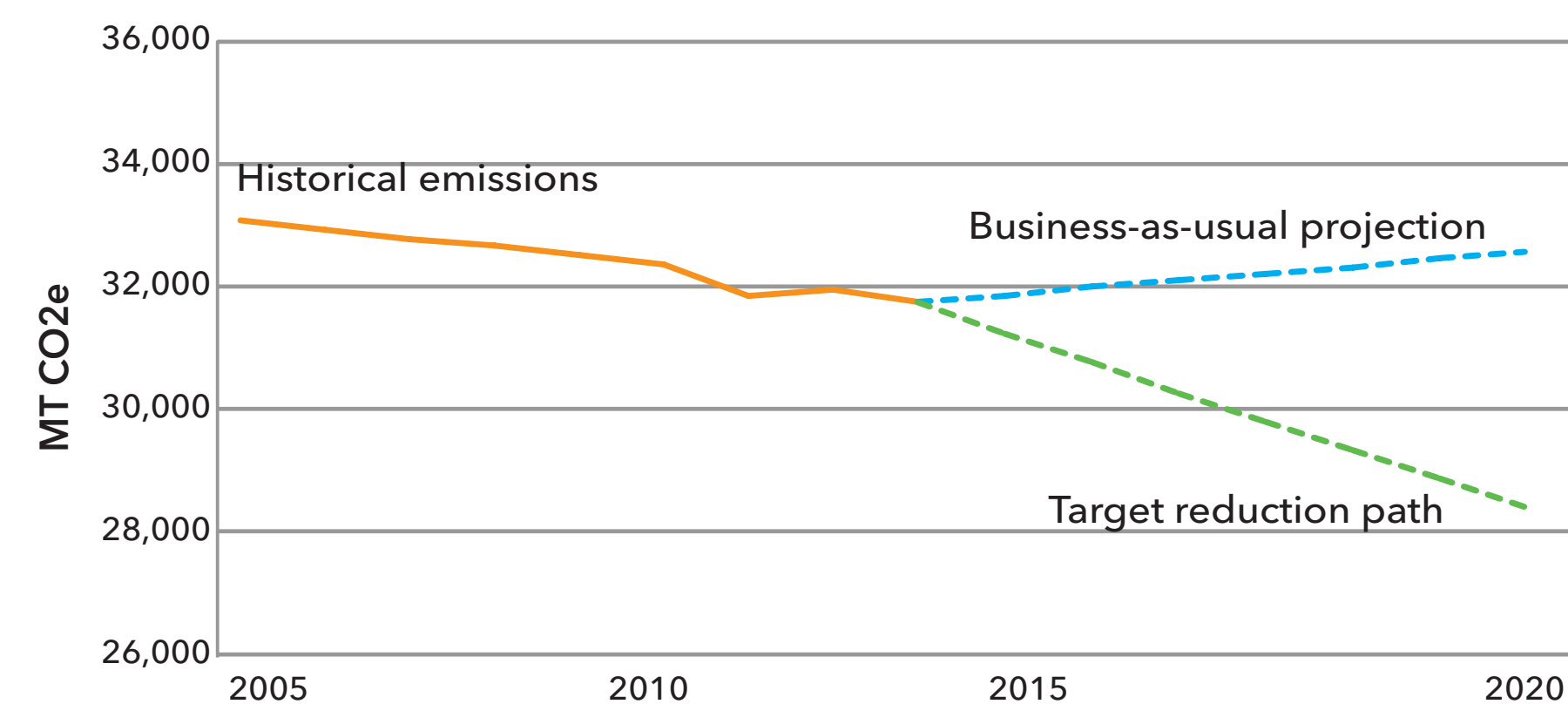
Participating Towns:

Atherton
Colma
Hillsborough
Portola Valley
Woodside

Participating County:

Unincorporated
San Mateo County

Climate Action Planning



RICAPS

Regionally Integrated Climate Action Planning Suite

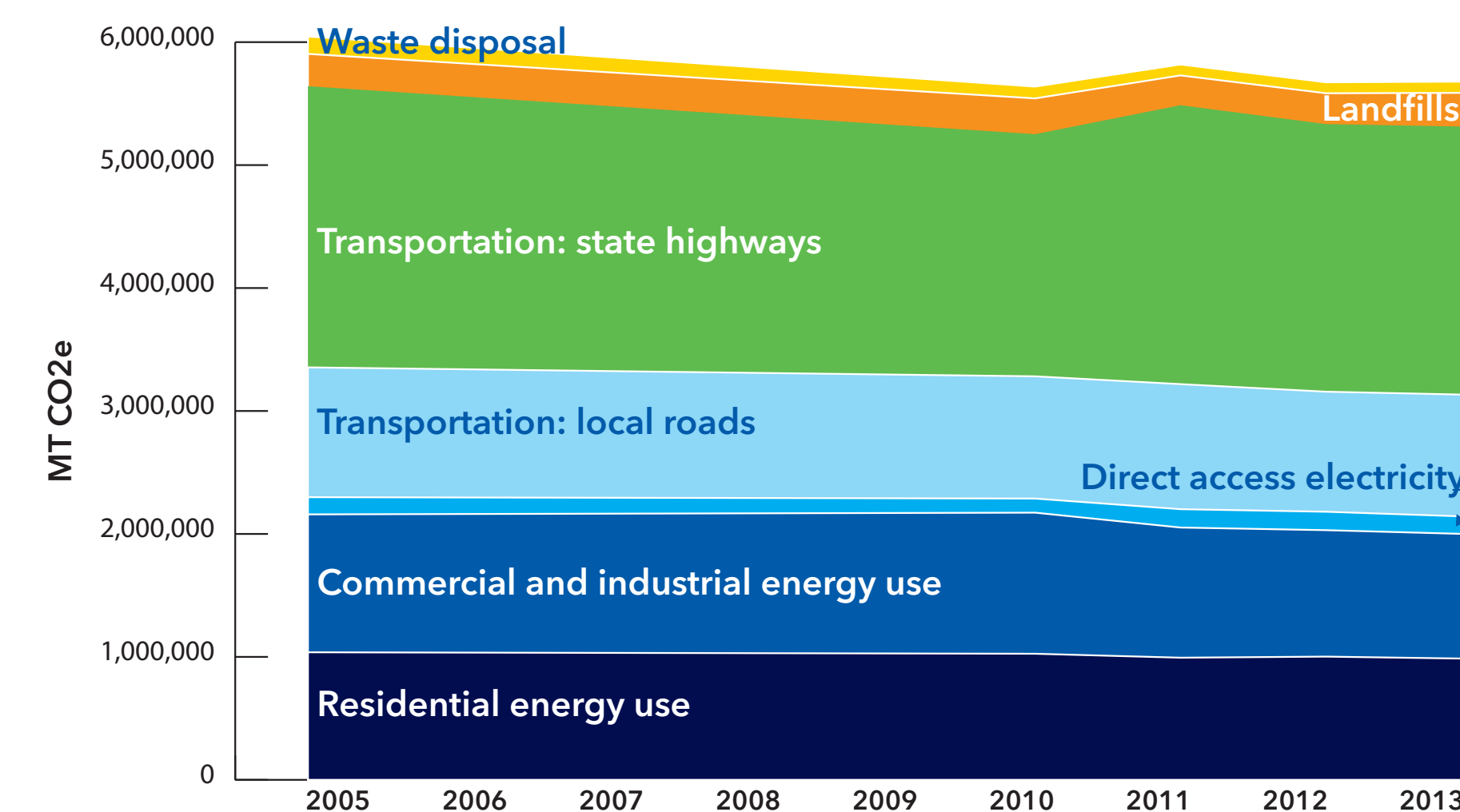
Assist cities in:

- Forecasting future emissions
- Selecting and quantifying the impact of CAP measures
- Writing qualified CAPs
- Convening stakeholders and facilitating workshops
- Assisting with staff reports and council meetings

First County awarded Gold Beacon Award

- Two cities awarded Silver Beacon Awards
- Multiple cities awarded 41 Beacon Spotlight Awards

Greenhouse Gas Inventories



6.1%

Overall decrease in county-wide emissions from 2005 to 2013

21

Annual community GHG inventories completed for all 21 jurisdictions in County

12

Twelve jurisdictions currently completing municipal operations GHG inventories

Preparing for a ZNE Future

Zero Energy Strategic Plan

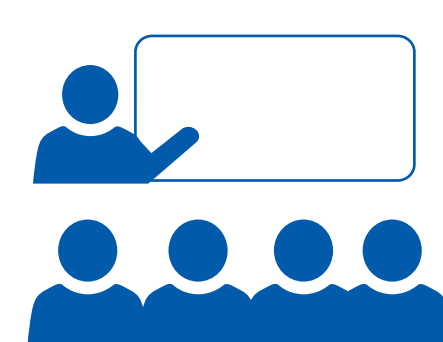
Four major zero energy commitments



Support municipalities by developing ZNE Action Plans and Templates



Nurture early adopters and projects

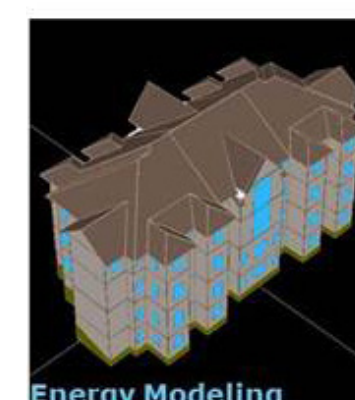
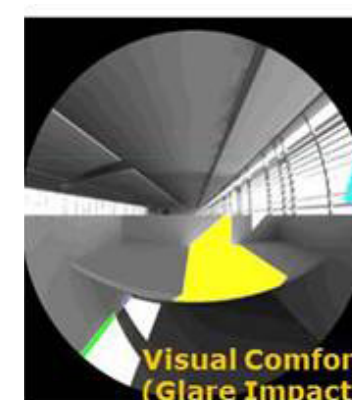
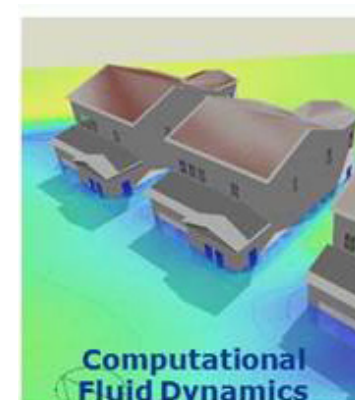
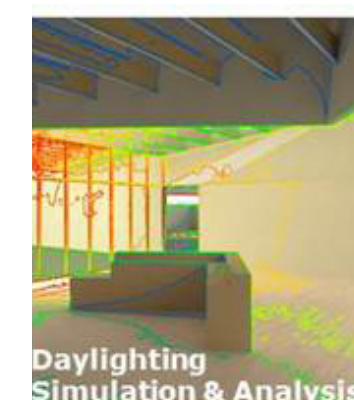


Train professionals about zero energy buildings



Provide training and information to building departments and commissions

Example zero net energy (ZNE) approaches in buildings



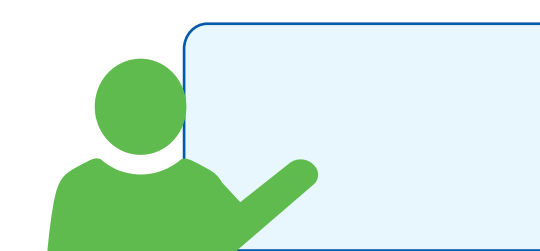
Monthly Peer-to-Peer Meetings



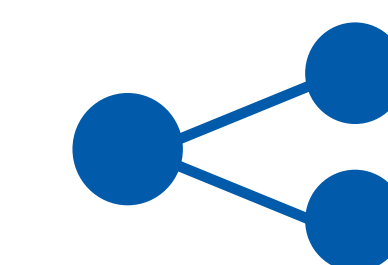
Municipal staff participate in monthly Multi-city Working Group meetings



Participants share valuable information



Participants receive coaching on developing, implementing and tracking their CAPs



Valuable opportunity to share best practices across jurisdictions