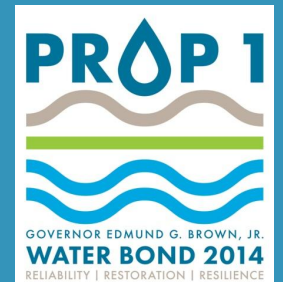


# TRIBAL ENGAGEMENT & OUTREACH PLAN

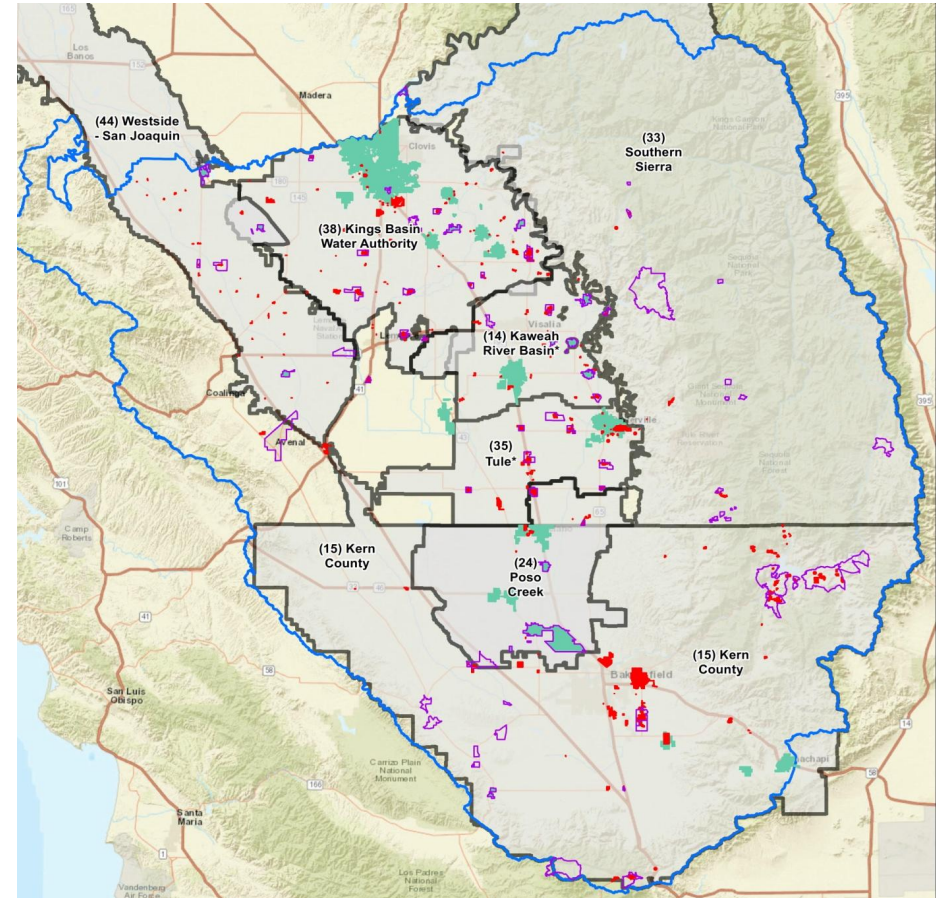
INTEGRATED REGIONAL WATER MANAGEMENT  
**DISADVANTAGED COMMUNITY INVOLVEMENT PROGRAM**  
DEPARTMENT OF WATER RESOURCES

Sonia Sanchez, Self-Help Enterprises



# TRIBAL ENGAGEMENT OUTREACH PLAN

- Tribal Engagement Plan for the TFKFA
- Develop outreach plan to provide awareness and education regarding IRWM and the DACI Program
- Identify best outreach and engagement practices for Tribes
- Identify projects that could benefit from the IRWM funding



# METHOD

- Worked with Tulare County, Tribal representatives, IRWM representatives, DWR Tribal Liaison, others
- Conducted two virtual stakeholder meetings
  - June 16, 2020
  - July 14, 2020

## Stakeholder Participants:

- Kelly Leyendekker (Tule River IRWM)
- Dirk Charley (Dunlop Band of Mono Indians – Tribal Liaison)
- Soua Lee (Kings Basin Water Authority IRWM – Program Manager)
- Charmaine McDarment (Tule River Tribe – General Counsel)
- Xochitl Ramos (Tule River Tribe – Chief Financial Officer)
- Rebecca Berg (County of Tulare - Civic Sparks Intern)
- Barbara Cross (Department of Water Resources - Office of Tribal Policy)
- Kelly Kucharski (Sierra Resource Conservation District – District and Programs Administration)
- Anecita Agustinez (Department of Water Resources - Tribal Policy Advisor)
- Steve Haze (Sierra Resource Conservation District – District Manager)
- Denise England (County of Tulare – Water Resources Program Director)

# STAKEHOLDER GROUP MEETING GOALS

- Provide information on the IRWM, DACI, and DACEEP program
- Discuss Tribal Engagement Plan and objectives
- Identify stakeholder interest in Tribal Engagement Plan
- Identify Tribal projects that can benefit from IRWM Funding

# DISCUSSION

- What effective methods would be helpful to help engage and outreach to Tribes?
- What are some of the potential challenges faced when performing outreach to Tribes?
- Are there capacity and technical assistance issues that Tribes encounter?
- What projects could Tribes start or advance with IRWM funding?
  - Hydrant replacement projects
  - Water Conservation Plans
  - Feasibility Study to look at the possibility of interconnecting the town
- Would developing different types of outreach materials be effective? Has this been effective in the past?
- What would you like to see IRWM regions or the Funding Area do to better engage with Tribes?

# TRIBAL ENGAGEMENT PLAN

## Sections of the Plan

- Background & Objectives
- Tribes
- Sources for the Plan
- Challenges
- Recommendations
- Outreach & Engagement Strategies
- Appendices

Tribal Engagement Plan for the  
Tulare-Kern Funding Area

**Prepared for:**  
Tulare-Kern Funding Area  
Disadvantaged Community Involvement Program  
Project Advisory Committee

**Submitted by:**  
Self-Help Enterprises

August 2020

**Prepared by:**  
Community Engagement and Planning Team  
Community Development Department  
Self-Help Enterprises  
Tribal Engagement Stakeholder Group

# TRIBAL ENGAGEMENT PLAN - TRIBES

- IRWM Grant Program identifies federally recognized Tribes and California Native American Tribes listed on the Native American Heritage Commission’s Tribal Consultation list as eligible grant applicants
- Developed comprehensive list of Tribes in Tulare-Kern Funding Area based on California Tribal Lands Map as developed and identified by DWR and the Native American Heritage Commission’s Tribal Consultation list

Tribe	IRWM Group
Chumash Council of Bakersfield	Kern IRWM
Kern Valley Indian Community	Kern IRWM
Kitanemuk & Yowlumne Tejon Indians	Kern IRWM
Tejon Indian Tribe	Kern IRWM
Tubatulabals of Kern Valley	Kern IRWM
Dumna Wo-Wah Tribal Government	Kings Basin Water Authority IRWM
Kings River Choinumni Farm Tribe	Kings Basin Water Authority IRWM
Traditional Choinumni Tribe	Kings Basin Water Authority IRWM
Cold Springs Rancheria	Southern Sierra IRWM
Dunlap Band of Mono Indians	Southern Sierra IRWM
Tule River Indian Tribe	Tule River Basin IRWM
Santa Rosa Rancheria Tachi Yokut Tribe	White Area (between Kings Basin Water Authority IRWM, Westside San Joaquin IRWM and Kaweah River IRWM)
North Fork Mono Tribe	White Area (between Southern Sierra IRWM and Kings Basin Water Authority IRWM)

# TRIBAL ENGAGEMENT PLAN - CHALLENGES

- **COVID-19** – Due to the pandemic, social distancing, and shelter-in-place, some Tribes have postponed on having Tribal Council meetings.
- **Staff Capacity** – Some Tribes are understaffed and overworked. Some are so busy with projects that they are not able to respond. For some Tribes, when elections happen, there follows a turnover in staff, which can make it hard to identify the right person to contact for outreach and follow-up.
- **Tribal Land** – There are some Tribes that do not have an interest in water management or project development. If Tribes have an interest in projects, sometimes their ability.



# TRIBAL ENGAGEMENT PLAN - RECOMMENDATIONS

- **Build Relationships** – Get to know the Tribe, the people and their needs.
- **Attend Tribal Council Meetings** – Some Tribes have a preference to have someone attend their meetings to get to know them.
- **Attend ongoing U.S. Forest Service Meetings** – The U.S. Forest Service hosts meetings for the Sierra National Forest and the Sequoia Forest Service that are in coordination with Tribes.
- **Provide Technical Assistance** – Conducting educational webinars/workshops on the IRWM program, and/or providing direct assistance to develop projects
- **Develop Educational Materials**
- **Continue Engaging and Communicating with Tribes** – Some Tribes have limited resources to attend and participate, but it is recommended to continue engaging with them and keeping them informed.
- **Respect a Tribe's Interest and Decision** – If a Tribe declines to participate, it is important to respect their decision.
- **Fund more DAC, SDAC and Tribal projects** – Every successful IRWM project will engender additional interest and motivation to participate in the program

# TRIBAL ENGAGEMENT PLAN – OUTREACH & ENGAGEMENT STRATEGIES

- Continue to update and maintain a contact list of Tribal representatives
- Continue to work with and update the stakeholder group for the TKFA, as needed
- Develop educational materials
- Develop case studies on Tribal projects that have been previously funded by IRWM
- Attend relevant Tribal meetings to learn more about the Tribes in the TKFA
- Attend ongoing meeting with the U.S. Forest Service that are held in coordination with the Tribes
- Present further information about the IRWM and DAC Involvement Program at Tribal meetings
- Assist Tribes with getting projects on project lists

**THANK YOU!**

Questions or  
comments?

**Sonia Sanchez**

Senior Community Development Specialist

Self-Help Enterprises

[SoniaS@SelfHelpEnterprises.org](mailto:SoniaS@SelfHelpEnterprises.org)

<https://bit.ly/TKFundingArea>